



Friends of St Andrew's Church  
Stratton, Cornwall

## **Newsletter Autumn 2017**

Volume 9 Issue 2



*Cover and page 13 photograph courtesy of Mr David Goodwin JP*

## **Dear Friends of St. Andrews,**

It's official - the Summer has come and gone. Like so many summers, this year has been a mixture of both hot, dry and sultry days and also the occasional days in which the weather has been a little damp. However, I guess most of us are hoping for an Indian summer that might lift our spirits before the winter rolls in. Throughout the summer period St. Andrew's church has been very busy with its usual services and not forgetting the occasions of the Flower Festival and the Craft Fair which brought so many visitors through the doors. It would be very remiss of me not to mention the weddings and baptisms that have also taken place and in turn brought many different people into church.

As autumn turns to winter and our eyes turn from Harvest towards St. Andrew's Gift Day and then on to Christmas we know that St. Andrew's will be very busy once again. The Christmas Eve Christingle is the highlight of the parish year with over 300 people attending the service raising valuable contributions for the Children's Society.

It's good to know that St. Andrew's church holds such an attraction for so many different people in so many different ways. Very often we are reminded that mission is a very important part of church life and so it is. One of the greatest visible signs of mission and church life is the building itself. It stands as a giant beacon at the centre of the parish. It is a great credit to the congregation and the members of FoStA who support them, for the way in which they keep St Andrew's in tip top condition for all people and all the events throughout the year.

Yours in Christ's service

Fr. David

## **Val Barker writes:**

It is hard to believe that the long summer school holidays will soon be over and our children and grandchildren will be starting the autumn term. The leaves on the trees around Stratton and the churchyard in particular are already changing colour as I write my editorial late August. I love the changing seasons and because of them there is always something new to be looking forward to and experiencing and the natural rhythm of life is somehow soothing and reassuring. We get used to life as it is.

Change can be disturbing, challenging and in some instances unwelcome. At St Andrew's the church life is changing in subtle ways and also in more obvious ones and for some it is extremely difficult while for others it is exciting and is seen as opportunity for growth, innovative development and progress.

Our Priest – now designated by the Diocese as Rector - has charge of four churches in the Combined Benefice and he is also Priest in Charge of the churches at Kilkhampton and Morwenstow...an almost impossible task in anyone's book and one that requires a great deal of support from retired clergy and lay ministry. We have been fortunate in having Alison Hardy as our Curate since June 2014 but before long she will be leaving us to take up her own parish, or most likely, parishes and this will be a change that will leave a huge hole in our lives. She has encouraged so many of us to use the gifts and skills we have and made many aspects of our worship seem new and exciting. Alison is going to be sorely missed by everyone in the area, church attenders and the wider community alike.

Another change that has been brought about by the changing scene of church life in our Benefice is the training and introduction of Local Worship Leaders...lay members who are licensed to take services. (See Alison's article on page 8.) This initiative was supported and encouraged by our priests, PCC and people as in some instances it is a Service of the Word on a Sunday or no service at all - Fr David cannot be everywhere on every Sunday, Saints Day and Feast Day.

For some, this change has added another dimension to our worshipping lives as we are able to offer non-Eucharistic services and this in turn has encouraged attendance by those who prefer a rather less formal type of service or as an introduction to worship. As one of the new LWLs I have to say that our once a month Morning Worship service has been very kindly received in Stratton, the congregation is gently increasing and our team is getting a great deal of personal satisfaction from this experience. We meet together for worship, prayer and service planning and find the support group activity both uplifting and fulfilling. It is a huge privilege and although the whole idea was daunting at first, and as a self-confessed traditionalist I wasn't at all sure that it was the right thing to be doing, I find that I am now enjoying being part of the team and helping directly with the Lord's work in this place which has supported and uplifted me over so many years. It is an opportunity to 'give something back'.

The change from the usual priestly led worship to be lay led is a huge step but something that isn't new...just something that needs getting used to and something that deserves to be experienced.

Perhaps the most difficult change to deal with will be the reorganization at the back of the church. It is interesting that a possible change in the building causes more discussion and debate than the changes in the way in which we approach our Lord but, in all our 'doings', I have faith that if it isn't the right thing it simply won't happen.

As ever, my thanks to you all, for all you have done, all you are doing and for all you will do. We are truly blessed in our Friends.

With every good wish from us all at St Andrew's.

*Val*

---

## **A Fond Farewell**

Earlier this year Emma and Bob Semple said 'Goodbye' to the Tree Inn, to their customers and friends and to Stratton ... we can still barely take it in!... and have taken up a new chapter in their lives after selling up and moving to Northern Ireland. Although we will miss them terribly our fond good wishes go with them.

Both Bob and Emma played huge roles in the community and were very good friends to St Andrew's and the other churches in the area. Although their good works are too numerous to mention here, we will be forever grateful for the gifts of their time and talents and generous hospitality.

Come back to see us soon.

*Ed*

## LYCH GATE PATH

Over the last few years the PCC had become aware that the path from the Lych Gate to the Tower Entrance was difficult for wheel chairs and had been the cause of occasional tripping due to the irregular nature of the central York flagstones and the cobbles on either side.



The Diocesan Advisory Committee were consulted and comparison was made with other areas of path around the churchyard, particularly that to the east and south east of the church which had been improved about 25 years ago.

In consultation with Mike Vanstone, a Kilkhampton based Ground Works Contractor, who had been involved in these



other path changes, it was agreed to use a prepared stone called Devontex which had a non-slip surface for the main area and have a slightly narrower border of cobbles at the sides.

The new central area is wider and the slabs laid in a pattern that provides safety as well as looks in keeping with the other paths.

The DAC approved the Faculty application and Mike Vanstone's team of men were employed in March 2017. They showed considerable respect for the environment, there was minimal disruption to church access, and it was all completed within 2 weeks.



The pictures show the path as it was originally, what it was like while being worked on, and how it looks now that it is completed.



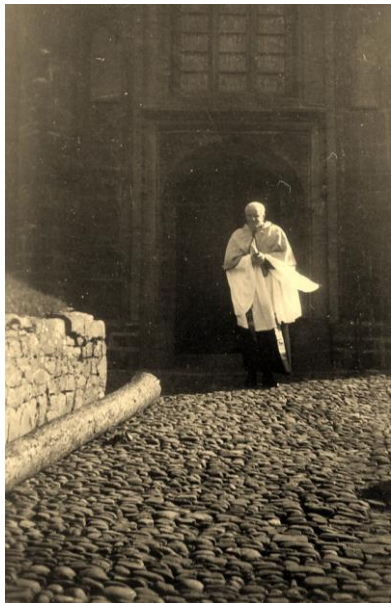
Wheelchair and motorised personal transport users, as well as those on two feet, are pleased with the result and the cost of £6,720.00p was covered with a grant to the PCC from FoStA. VAT of £1,120.00p is being reclaimed for FoStA funds.

The old York stones are to be used to make an extension to the path that leads to the top of the churchyard, through the newer burial site, to a seat that overlooks the graves and the church below. It is hoped this will be achieved this autumn by volunteers led by the Fabric Committee.

Once again the generosity of the Friends of St Andrew's, and many generous donations, has been put to a good and lasting improvement for which the PCC and all those who use the path have shown and voiced their appreciation.

*Ian Barker for the Fabric Committee*

---



*A picture from the archives showing Canon Cyril Leslie Jones (Vicar at Stratton 1911-32) coming down the same path from the West Door – note the cobbles covering the whole area.*

*Our new path featured in the Flower Festival this year and one of our members Ellen Hall created an evocative arrangement using the text from Jeremiah 6:16 & it was entitled 'Paving the Way'. I wrote in the schedule – How many feet have passed this way over the centuries all coming and going to and from this place of worship. The surface of the walkway may **change** over the years but the pathway remains ...*

*Ed*

## **Local Worship Leaders – their Training and Role**

Over the past few months a group of nine brave souls from several of the local churches in our North Kernow Cluster of six churches, have stood forward and volunteered to train as Local Worship Leaders. The course was several weeks long and involved meeting together for training and practice. It included some theology, liturgical instruction and practical tasks. Each volunteer produced a file of work which was submitted to the Diocesan Discipleship Officer for assessment. On the 20th June this year they were commissioned by Archdeacon Audrey, the Archdeacon of Bodmin Archdeaconry, at a special service of licensing in St Marwenne's Church, Marhamchurch. The candidates compiled their own commissioning service: those who attended were able to experience firsthand their newly developed skills in action. And it was indeed an uplifting and engaging service to see so many church members step forward to offer their discipleship in such a public role, and was well attended and supported by a large gathering from all the churches.

If you have never been at a service led by a Local Worship Leader you may be wondering what they can do. They can in fact lead a variety of services, such as: Morning Prayer / Matins or Evensong; Family Services including Messy Church or a Crib Service; non-Eucharistic services such as Songs of Praise, a Carol Service or Harvest Festival; to give a few examples. Local Worship Leaders can also lead services alongside a priest, sharing the leading together, including those parts of sacramental services of Holy Communion and Holy Baptism which do not have to be led

by a priest. Unlike Readers who have taken a 3-year course of theological study, Local Worship Leaders are unable to preach. However they can bring a few thoughts with them, a reflection or stories, either their own or another's. They can lead alone - or as part of a team, which many prefer, each responsible for a different part of the service. Once licensed they work in the area with which they are comfortable and as agreed with the parish priest. Some Local Worship Leaders lead services in more than one church, some lead monthly, some occasionally when required.

In St Andrew's three members of the congregation were amongst those licensed on the 20th June. They now regularly lead a monthly service of Morning Worship which is well supported by the congregation and a few other parishioners who enjoy participation in a non-Eucharistic service. As they have engaged with their training they have put their faith into action and grown in their discipleship. This has not only stretched and grown their own faith, it is evident that it has also grown the faith of others who have seen what they are doing and become appreciative of it. And this is a valuable part of our worship.

Local Worship Leaders play an increasingly important role in the life of our worshipping communities. They have local knowledge, and through their help in sustaining services, they keep the Parish Church thriving and our Christian faith alive. Without them we would be the poorer.

May God bless you.  
Yours in Christ,  
Sister Alison.

## **Proposed Developments for the Rear of St. Andrews**

Although St. Andrew's has a faithful and dedicated congregation, as with many other churches, it is an aging one. It is not realistic to think that the financial needs of the church can be met by the weekly giving of the current congregation alone. Existing fundraising events help considerably, but it is clear that if the church is to have a sustainable future, we need both to be able to attract new, younger members into the church family and also look to ways we can use the church building to generate additional income and become increasingly self-sustaining.

In recent years a significant proportion of the income of the church is from catering at the flower festivals, fairs and other similar occasions. This is always popular and well appreciated by the local community and seen as a beneficial social activity. We would like to be able to develop this. However, currently the scope of the catering is restricted by the facilities and space available. The menu must be suitable for pre-cooking at home and then heating up in microwaves or on a portable hob. Furthermore the space available for tables and chairs is very limited, resulting in tables being squeezed into the space adjacent to the font, in the aisle and other areas scattered throughout the church. Circulation is poor, with little space between tables and many trip hazards, an unsatisfactory situation when carrying hot food and drinks.

In addition to our own needs, there have been enquiries from several local groups regarding hiring the church, including:

- After school weekday club for younger children.

- Mothers and Toddlers group, making use of a local Toy Library.
- Weekly coffee club and Lunch for pensioners.
- Gardening club for local allotment users.
- Flower Club including arranging demonstrations.
- The local patchwork circle.

We would love to be able to welcome these groups into the church building but are currently not able to offer a suitable space or facilities.

For the past year the PCC has therefore been considering options for how we might improve the facilities that the church can offer and make the space work better for us. Preliminary proposals were produced and an initial meeting held with the Archdeacon and members of the Diocesan Advisory Committee (DAC), who were generally supportive. The proposals have been developed, plans drawn up and a formal Petition for Faculty has now been submitted. It is hoped that this will be considered at the September meeting of the DAC. The proposals comprise the reordering of the back of the Church to create an open, multi-purpose area complete with new kitchen facilities. This will entail:

1. Removal of pews and storage units/cupboards from the back of the Church, with the historic pew ends re-used in alternative locations. The raised platforms below the pews are to be removed and the complete floor area at the back of the Church is to be levelled with new floor tiling throughout.
2. Relocation of the Font from its existing location at the back of the Church to a new location in the South Aisle. The rear rows of pews in the South Aisle are to

be removed to provide the space for the font, with the historic rear pew reinstalled immediately behind the remaining pews. The raised platform is to be removed and the complete floor area is to be levelled with new floor tiling throughout.

3. Relocation of Vestry from the existing enclosure at the back of the Church to the Upper Room adjacent to the Lady Chapel. This was the original location of the Vestry. All furniture and fittings is to be removed from the existing Vestry enclosure for reuse where appropriate in the new Vestry. Also the existing Vestment wardrobe is to be moved from the Tower Room to the new Vestry.
4. Provision of new kitchen facilities. The existing Vestry enclosure at the back of the Church is to be adapted and enlarged to create a new kitchen space, matching the new infill panels with the joinery of the existing enclosure. The floor inside the new kitchen enclosure is to be levelled and the space fitted out with new kitchen units and appliances.
5. Modifications to heating, plumbing and electrical installations as necessary to suit the above.

It is anticipated that these proposals will result in more community use of the church building once this additional space is available. It is also hoped that the enlarged area will encourage greater community involvement in church based groups and activities and as a result encourage more people to join us for our regular worship.

*Simon Waring.*  
*Churchwarden*



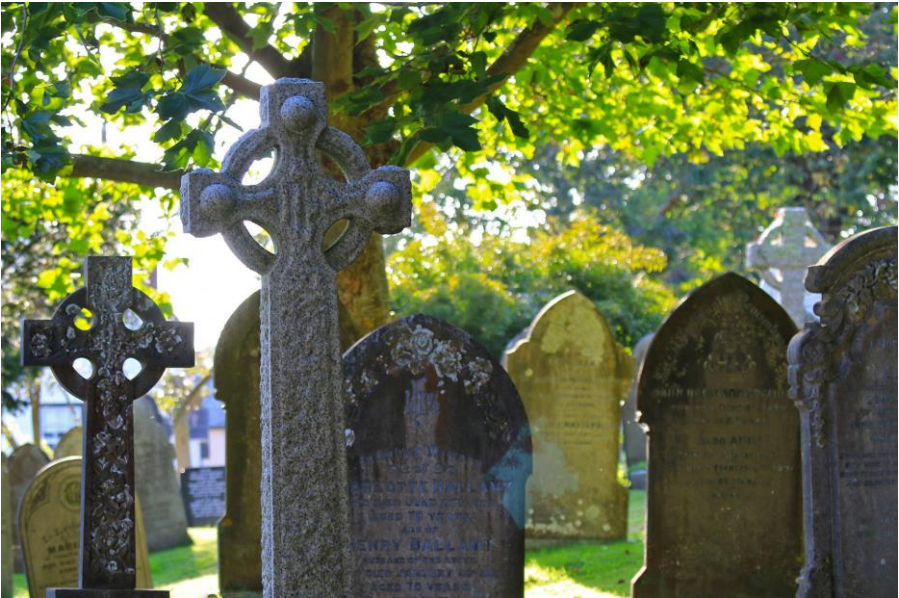


## In Memoriam

**Mrs Patricia Mary Bright** died on 27<sup>th</sup> May. Her funeral service took place on Monday 19<sup>th</sup> June 2017 at 12 noon at St Andrew's. Her earthly remains were buried in the churchyard.

Pat had been one of our very first members joining FoStA on 26<sup>th</sup> September 2008. She was keen to support us in all we did particularly in matters concerning the churchyard where her husband is buried.

We offer sincere condolences and our prayers to all her family and many friends. May she Rest in Peace.



## **Dates for Your Diary**

- Saturday 28<sup>th</sup> and Sunday 29<sup>th</sup> October  
**Craft Fayre** at St. Andrew's from 10am to 4pm
- Saturday 25<sup>th</sup> November  
**St Andrew's Fair and Gift Day**  
in the Church 10am to 4pm
- Monday 4<sup>th</sup> December  
**Old Cornwall Society Carol Concert**  
in the Church at 7.30pm
- Saturday 9<sup>th</sup> December  
**Carols and Canapes at Crossways**  
at 7pm by kind invitation of Anne and Geoff Day.  
Our pre-Christmas Fund Raiser.  
Tickets at £12.50 each are available from Val Barker  
or one of the FoStA committee members.
- Sunday 17<sup>th</sup> December  
**Service of 9 Lessons and Carols**  
at St Andrew's starting at 6pm

The online monthly calendar is kept up to date by our Web Master with services and events so do check for further details at [www.fosta.org.uk](http://www.fosta.org.uk) particularly over the Christmas period.

## The Calvary Cross (Update)



Unfortunately I have nothing further to report with regard to this memorial and its mysterious disappearance. I had hoped that someone just might remember something about it after reading the article in the spring issue of the Newsletter but this has not been the case.

To date I haven't been able to make a thorough search of all the records – that is ongoing - but I certainly still hold out some hope of finding something in due course. *Ed*

**\* \* Items for Sale \* \***

Please remember the on line FoStA Shop with our Christmas cards. There is stock of the lovely ones which were new for 2016, and some others, so do have a look. We are also somewhat hopeful of having a new design printed shortly. Cards with a religious theme are getting more difficult to obtain, so we are told, but we have plenty to choose from! The order forms can be found on line at the website.

**FoStA Newsletter is published by  
St Andrew's Church, Stratton, Cornwall. EX23 9DW**

Members are sent a copy by post and  
a PDF version is available on the FoStA web site -  
[www.fosta.org.uk](http://www.fosta.org.uk)

**Parish Priest:** Father David Barnes

1 Lanvean, Cleavelands, Stratton, Bude. EX23 8LJ  
Tel: 01288 352254 e-mail: [d.barnes645@btinternet.com](mailto:d.barnes645@btinternet.com)

**Curate:** Revd Alison Hardy

Newfield, Brook Drive, Bude. EX23 8NY  
Tel: 01288 488308 e-mail: [reverendalisonhardy@gmail.com](mailto:reverendalisonhardy@gmail.com)

**Newsletter Editor:** Mrs Val Barker

Chynoweth, Bowden, Stratton, Bude EX23 9BH  
Tel: 01288 353435 e-mail: [memsec@fosta.org.uk](mailto:memsec@fosta.org.uk)

*\*\* If you are prepared to view the newsletter on line or  
print it yourself, please let me know. \*\**



